

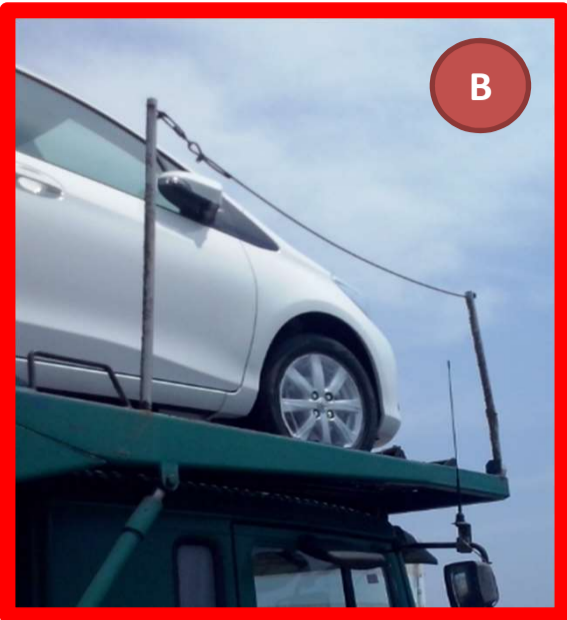
# Truck Loading Audit Guidelines

## SAFETY RAILS

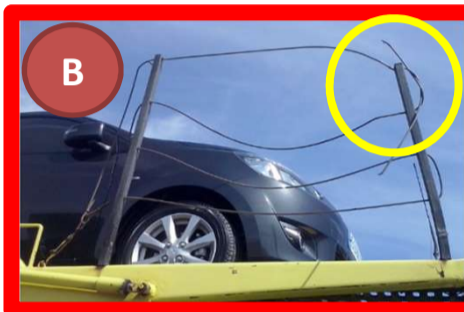
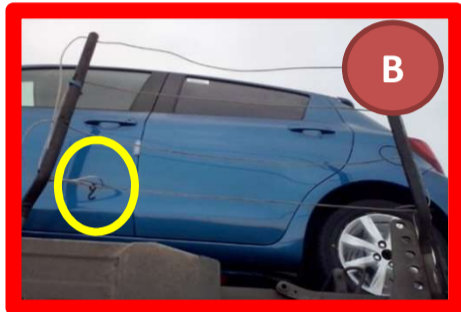


**OK Condition**

- \* All Safety rails installed (according to manufacturer)
- \* 4 protected wires
- \* No sagging
- \* Poles in good condition (not broken, visible rust...)



**NOK: Missing wires**



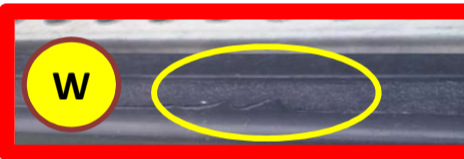
**NOK: Missing or weak connections**



**NOK: Missing safety rails**

**NOK: Excessive sagging**

## ANTI-SLIP



**Walking areas**

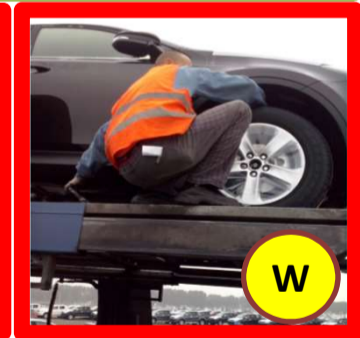


**Ladder steps**

## FRONT UPPER DECK



**OK: Lash from protected areas + 3-point of contact.**



**NOK: Get in/out of car and lash on unprotected area**

## REAR UPPER DECK



**OK: Lower deck for lashing.**



**NOK: Lash from top of deck**

## LADDERS



**NOK: Lash from ladders**

## PPE



**B THE USE OF HI-VIZ CLOTHES AND SAFETY SHOES IS MANDATORY DURING WHOLE OPERATION. GLOVES ARE MANDATORY FOR LASHING**

**B Truck or driver BLOCKED**

**W Warning**